



Department of Planning  
and Environment

Issued under the Environmental Planning and Assessment Act 1979

Approved Application No DA 22/11518

Granted on the 16 December 2022

Signed E Liang

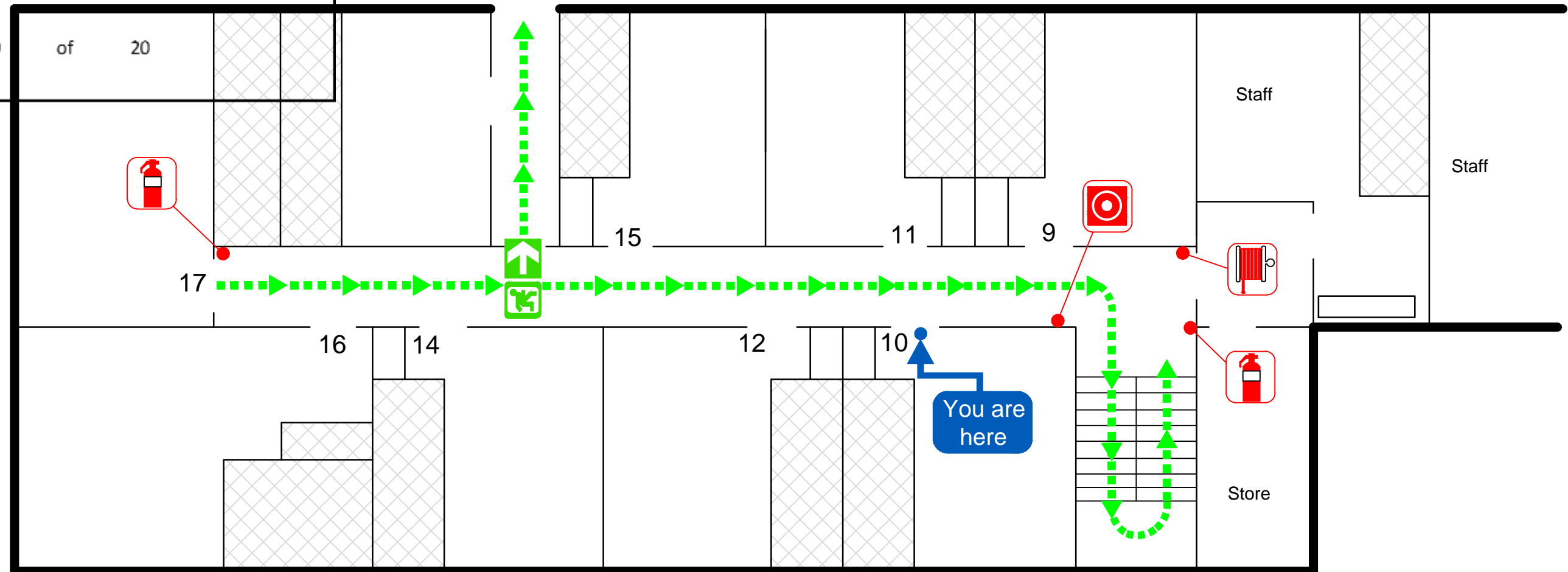
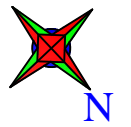
Sheet No 10

of 20

# EVACUATION DIAGRAM

NAME : CHALET SONNENHOF

ADDRESS : 29 Wheatley Rd, Perisher Valley NSW 2624  
Second Floor



NOT TO SCALE

## EVACUATION PROCEDURE

### RACE PRINCIPLE

**STAGE 1:- REMOVE** people, occupants and staff away from the danger.

**STAGE 2:- ALERT** the Fire Service. Telephone "000". Notify Warden/chief Warden.

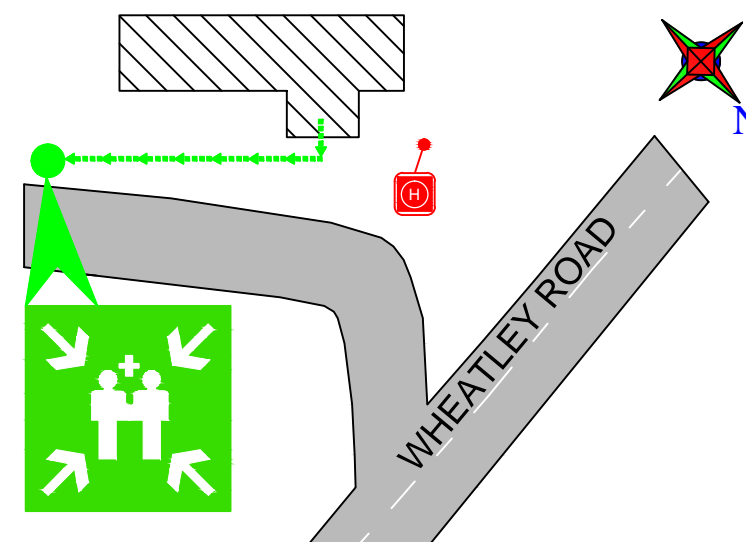
**STAGE 3:- CONTAIN** the danger (fire) where possible, where safe to do so and if trained to do so.

**STAGE 4:- EVACUATE:** Follow (chief) warden's instruction, close doors behind you and go to the assembly area.

## LEGEND

- POWDER EXTINGUISHER
- FIRE HOSE REEL
- MANUAL CALL POINT
- FIRE HYDRANT
- EMERGENCY EXIT
- EXIT ROUTE
- ASSEMBLY AREA

## SITE LOCATION



Prepared by:  
SPS Fire and Safety  
Contact: 1800 799 147  
[www.spsservices.com.au](http://www.spsservices.com.au)  
Date Prepared: 05-March-2015  
To be printed in A3 size  
Validity 5 Years

EVACUATION PROCEDURE










**RACE PRINCIPLE**  
**STAGE 1:- REMOVE** people, occupants and staff away from the danger.

**STAGE 2:- ALERT** the Fire Service. Telephone "000". Notify Warden/chief Warden.

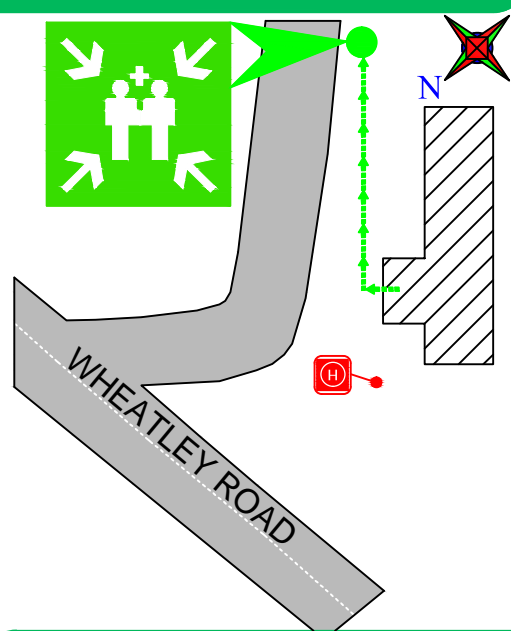
**STAGE 3:- CONTAIN** the danger (fire) where possible, where safe to do so and if trained to do so.

**STAGE 4:- EVACUATE:** Follow (chief)warden's instruction,close doors behind you and go to the assembly area.

LEGEND

-  CO2 EXTINGUISHER
-  POWDER EXTINGUISHER
-  FIRE BLANKET
-  FIRE HOSE REEL
-  MANUAL CALL POINT
-  FIRE HYDRANT
-  EMERGENCY EXIT
-  EXIT ROUTE
-  ASSEMBLY AREA

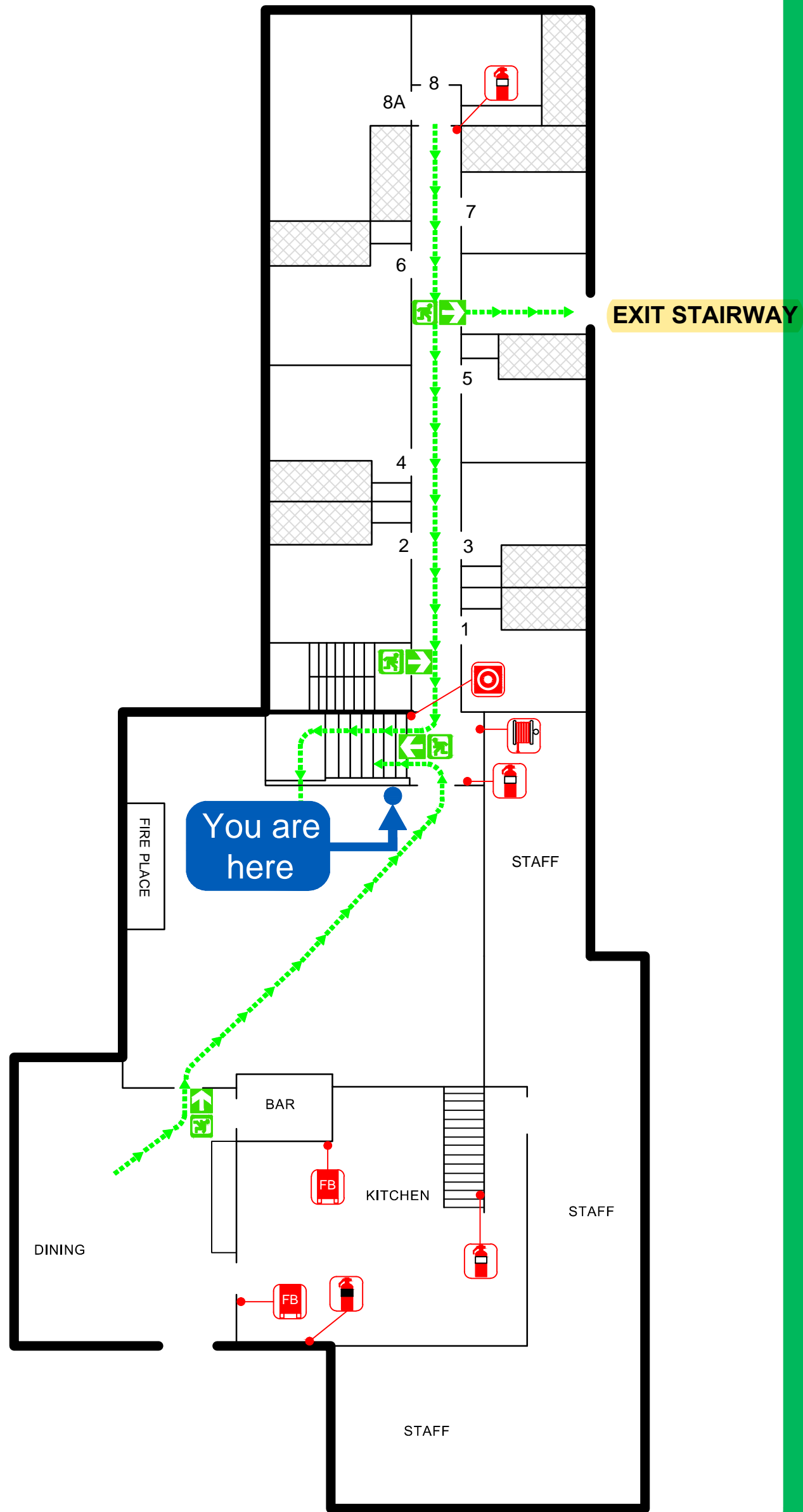
SITE LOCATION



Prepared by:  
SPS Fire and Safety  
Contact: 1800 799 147  
[www.spsservices.com.au](http://www.spsservices.com.au)  
Date Prepared:  
**05-March-2015**  
To be printed in A3 size

EVACUATION DIAGRAM

NAME : CHALET SONNENHOF  
ADDRESS :29 Wheatley Rd, Perisher Valley NSW 2624  
First Floor



NOT TO SCALE

## EVACUATION PROCEDURE

### RACE PRINCIPLE



**STAGE 1:- REMOVE** people, occupants and staff away from the danger.

**STAGE 2:- ALERT** the Fire Service. Telephone "000". Notify Warden/chief Warden.

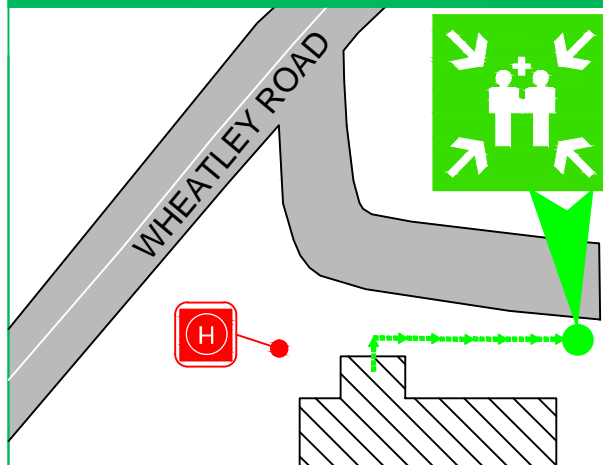
**STAGE 3:- CONTAIN** the danger (fire) where possible, where safe to do so and if trained to do so.

**STAGE 4:- EVACUATE:** Follow (chief) warden's instruction, close doors behind you and go to the assembly area.

## LEGEND

-  POWDER EXTINGUISHER
-  FIRE HOSE REEL
-  FIRE INDICATOR PANEL
-  MANUAL CALL POINT
-  FIRE HYDRANT
-  EMERGENCY EXIT
-  EXIT ROUTE
-  ASSEMBLY AREA

## SITE LOCATION



Prepared by:  
SPS Fire and Safety  
Contact: 1800 799 147  
[www.spsservices.com.au](http://www.spsservices.com.au)

Date Prepared:  
05-March-2015

To be printed in A3 size  
Validity 5 years

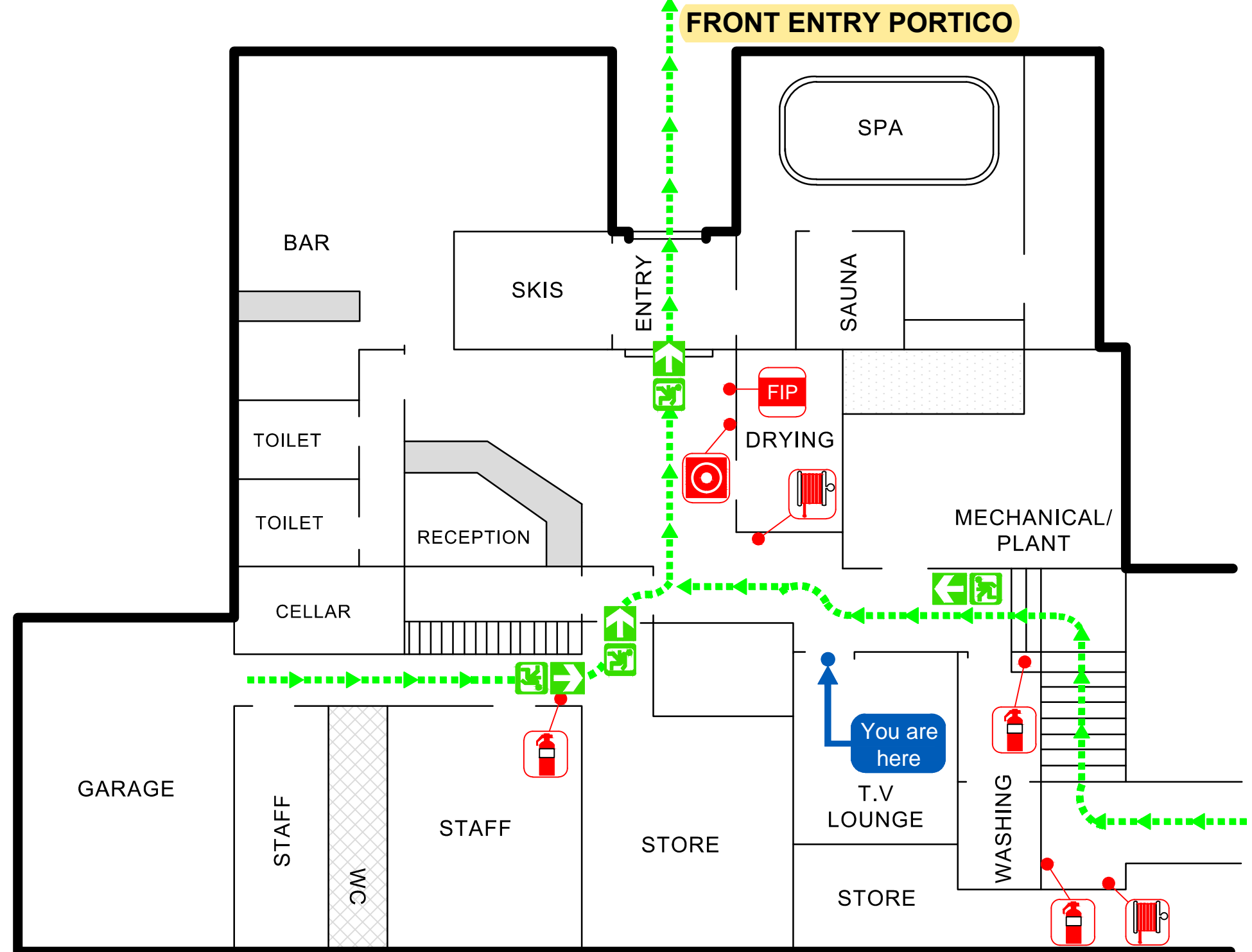


# EVACUATION DIAGRAM

NAME : CHALET SONNENHOF

ADDRESS : 29 Wheatley Rd, Perisher Valley NSW 2624

Ground Floor



NOT TO SCALE